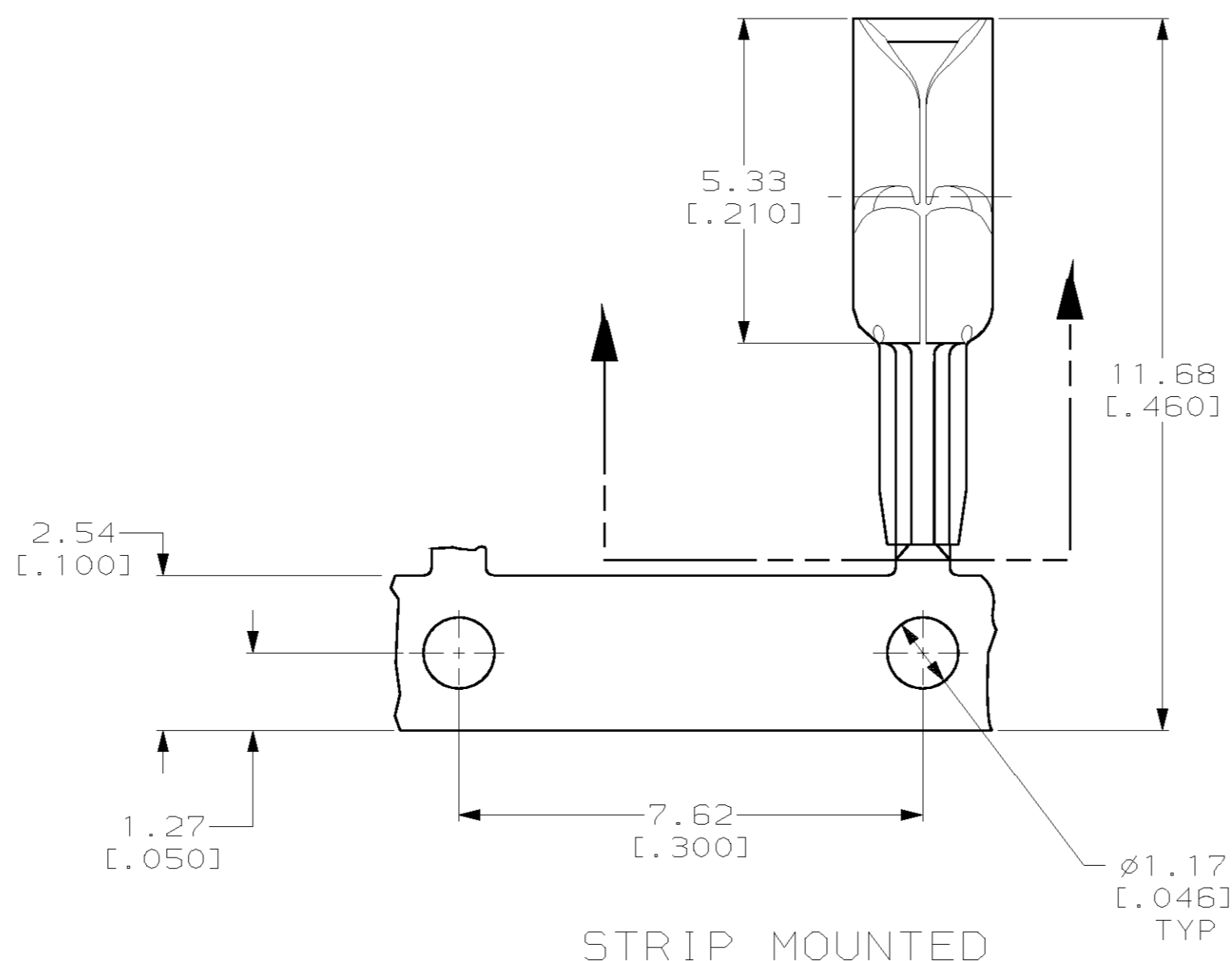
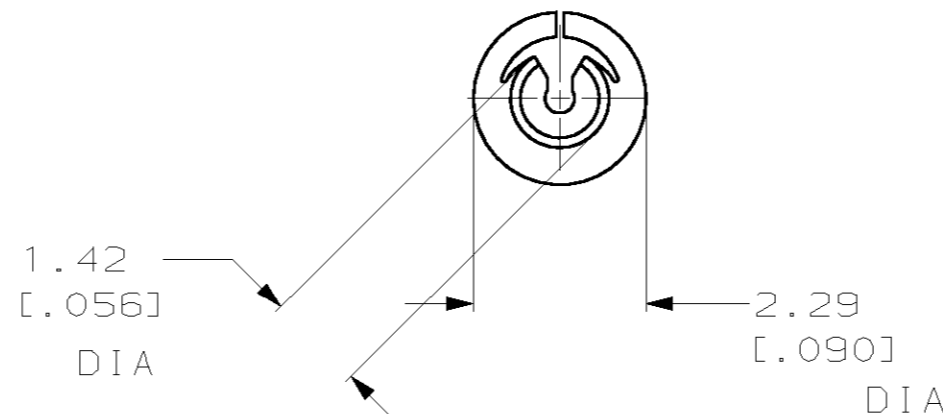
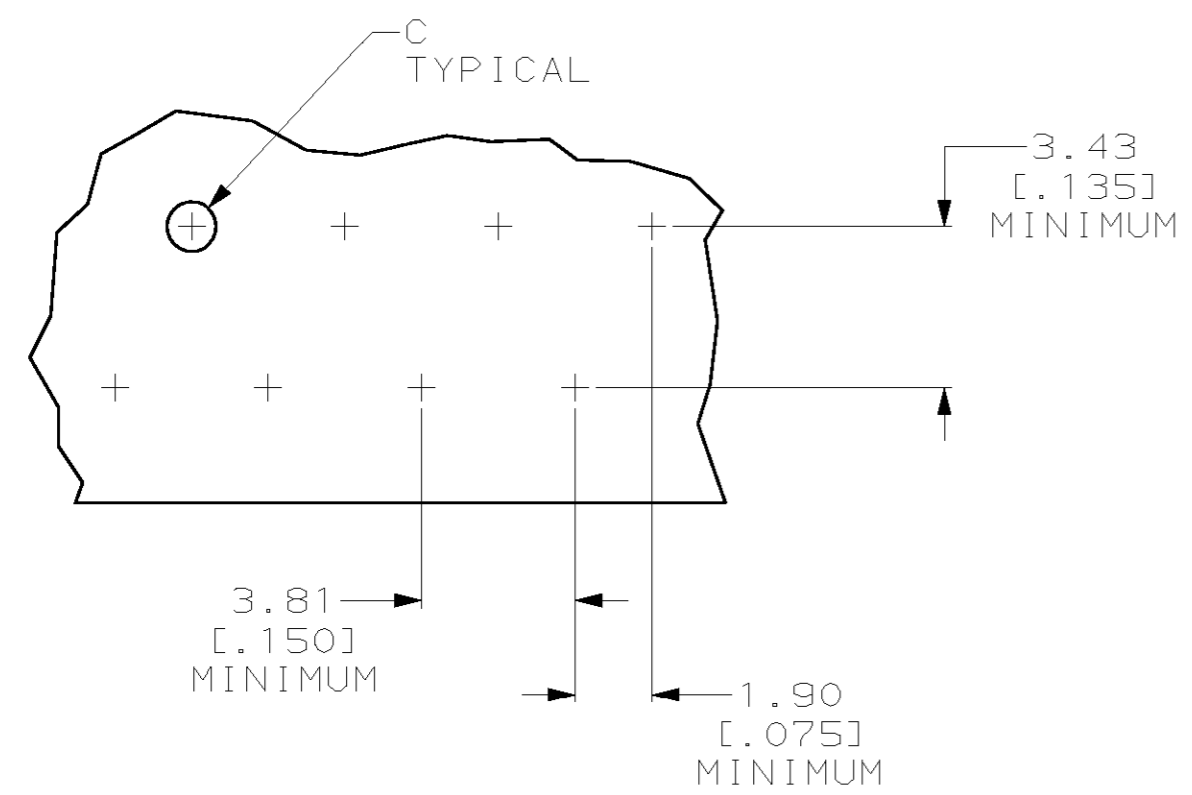


THIS DRAWING IS UNPUBLISHED. RELEASED FOR PUBLICATION .19
 (C) COPYRIGHT 19 BY AMP INCORPORATED. ALL RIGHTS RESERVED.

LOC	DIST	REVISIONS			
P	LTR	DESCRIPTION	DATE	DWN	APVD
AF	50	A	REL PER 0G3A-0844-00	02JAN01	JR EH



1. ALL DIMENSIONS SHOWN ARE FOR REFERENCE ONLY.
 2. FOR USE IN PRINTED CIRCUIT BOARDS 3/64, 1/16 AND 3/32 THICK.
 3. WIRE RANGE: 22-28 AWG (SOLID) OR (STRANDED) WIRE. MAXIMUM OUTSIDE DIAMETER 1.34[.053].
 4. STRIP MOUNTED BY SMALL END OF BARREL.
 5. TERMINAL SHALL ACCOMMODATE ONE OR TWO WIRES OF THE SAME TYPE AND WITHIN +/- ONE WIRE GAUGE SIZE.
 6. STRIPE OF SOLDER RESIST INSIDE OF TERMINAL PREVENTS SOLDER WICKING.
- ⚠ PREPLATED 0.00381 [.000150] MIN MATTE TIN-LEAD OVER 0.00127 [.000050] MIN MATTE NICKEL.
- ⚠ PREPRODUCTION - FASR REQUIRED



SUGGESTED PRINTED CIRCUIT BOARD MOUNTING DIMENSIONS
 SCALE 8:1

1.22-1.32 [.048-.052]	1.27-1.37 [.050-.054]	STRIP MOUNTED	⚠ 1217524-2
PUNCHED HOLE	DRILLED HOLE	DESCRIPTION	PART NUMBER
DIMENSION C			

<small>THIS DRAWING IS A CONTROLLED DOCUMENT FOR AMP INCORPORATED. IT IS SUBJECT TO CHANGE AND THE CONTROLLING ENGINEERING ORGANIZATION SHOULD BE CONTACTED FOR THE LATEST REVISION.</small>		DWN JR RUTH 260CT00	260CT00	AMP AMP Incorporated Harrisburg, PA 17105-3608
DIMENSIONS: mm [INCHES]		CHK E HOWARD 260CT00	260CT00	
TOLERANCES UNLESS OTHERWISE SPECIFIED: 0 PLC ±- 1 PLC ±- 2 PLC ±- 3 PLC ±- 4 PLC ±- ANGLES ±- FINISH ⚠		APVD E HOWARD 260CT00	260CT00	NAME E HOWARD PRODUCT SPEC 108-6025 APPLICATION SPEC 114-6000 WEIGHT - CUSTOMER DRAWING
MATERIAL PHOS BRONZE		SIZE A2	CAGE CODE 00779	DRAWING NO C-1217524 SCALE 10:1 SHEET 1 OF 1 REV A